

**SECURITY GATES AND FIRE DEPARTMENT ACCESS
L.A.M.C. 57.09.04**

**PUBLIC STREETS, PRIVATE STREETS,
ACCESS ROADS AND FIRE LANES**

PUBLIC STREETS

A right-of-way for public street purpose may not be closed by use of a security gate. State Law prohibits the closure of Public Streets in a way that would allow only a select group the right of passage.

PRIVATE STREET, ACCESS ROADS AND FIRE LANES

When required for Fire Department access shall be maintained unobstructed and in good condition for vehicular usage at all times. The Fire Department may allow closure by approved security gates that comply with the following standards:

MINIMUM STANDARDS FOR SECURITY GATES

Gates shall not reduce the required roadway width to less than the minimum width required by the Fire Department (20 ft. free and clear, see attachment).

Adequate stacking lane shall be provided based on the projected volume of traffic for the project. The stacking lane is for visitor traffic waiting for permission to enter through gate, without blocking the cross street (see attachment).

MANUALLY OPERATED GATES

When closed and locked, manually operated gates shall be locked with a chain and padlock. The chain shall be limited to 3/8 inch diameter non-case hardened metal links. Multiple padlocks may be used as links of the chain.

POWER OPERATED GATES

Power operated gates shall be equipped with a Fire Department approved security gate override device.

SECURITY GATE OVERRIDE DEVICE REQUIREMENTS

The override device shall consist of the following:

1. FIRE DEPARTMENT ACCESS BOX

A weather proof metal box approximately 6 inches wide by 7 inches high. The front of the box shall consist of a hinged metal door with hasp for a padlock. The box and the door shall be painted red. FIRE DEPARTMENT ACCESS shall be painted on the front of the box with 1 inch high by ¼ inch wide white letters. The door shall be locked with a Fire Department padlock or with an expendable padlock which can be cut off with a small bolt cutter.

2. PLACEMENT OF FIRE DEPARTMENT ACCESS BOX

The box shall be installed on a gate support pillar or post adjacent to the gate. The box must be visible to anyone approaching the gate at all times.

3. OVERRIDE OPERATION

Mounted within the box shall be a high quality two position toggle switch. Position one shall be for normal operation. Position two shall be the override operation. When the switch is in the override position, the gate or gates shall open and remain open until the switch is placed back in position for normal operation.

A Knox Company (L.A. City Fire Department approved) key operated two position switch or a spring operated switch inside the box which automatically moves to the override position when the box is opened, are acceptable alternatives.

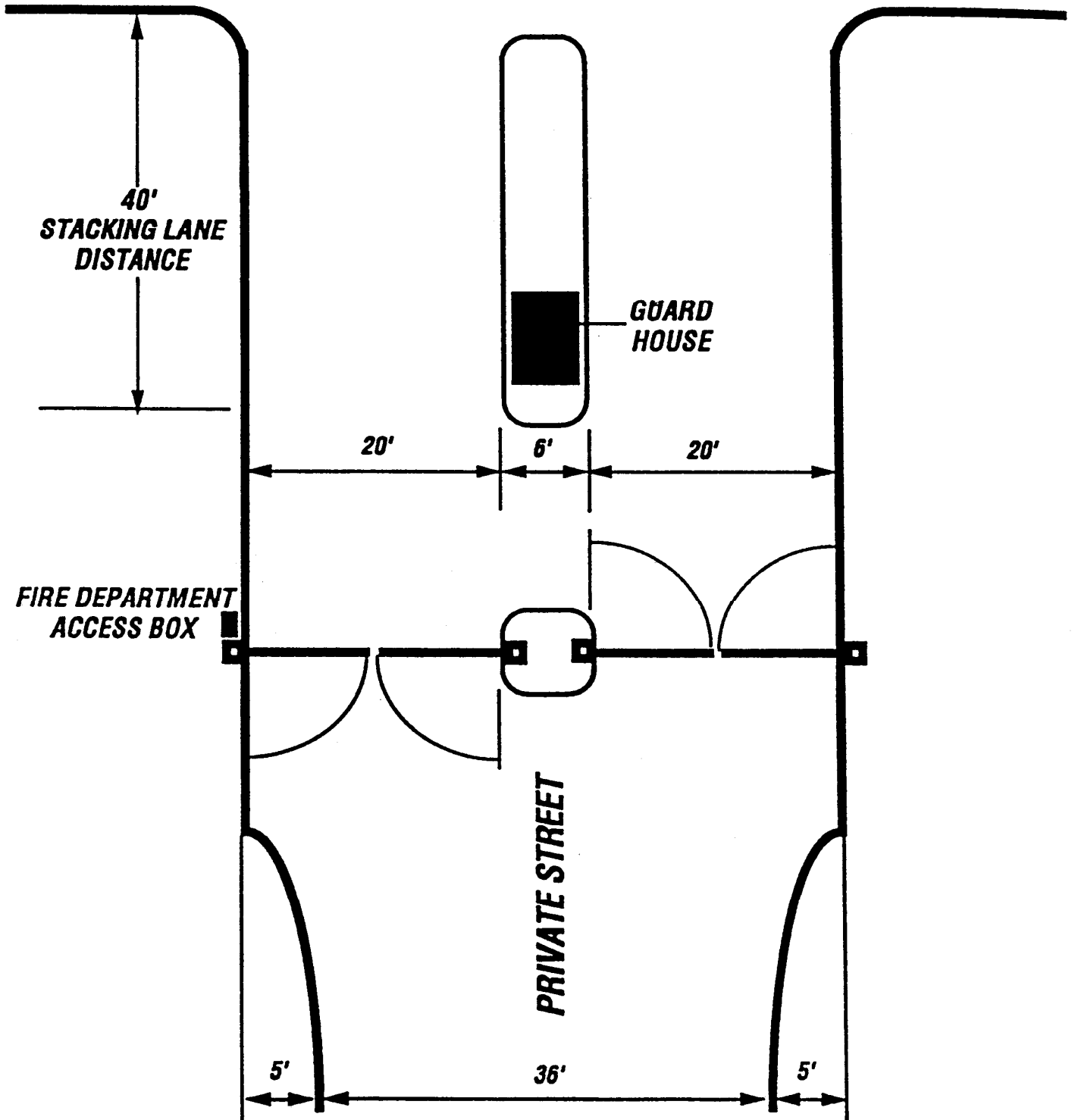
4. TIMING OF OVERRIDE OPERATION

When the switch is moved to the override position, the gate/gates shall fully open within 10 seconds.

5. FAIL SAFE OPERATION REQUIREMENTS

In the event of a power failure, including battery back-up, the gate/gates shall automatically open, by spring tension or other non-electrical method, or the gate must be capable of being pushed open without additional steps having to be performed.

PUBLIC STREET



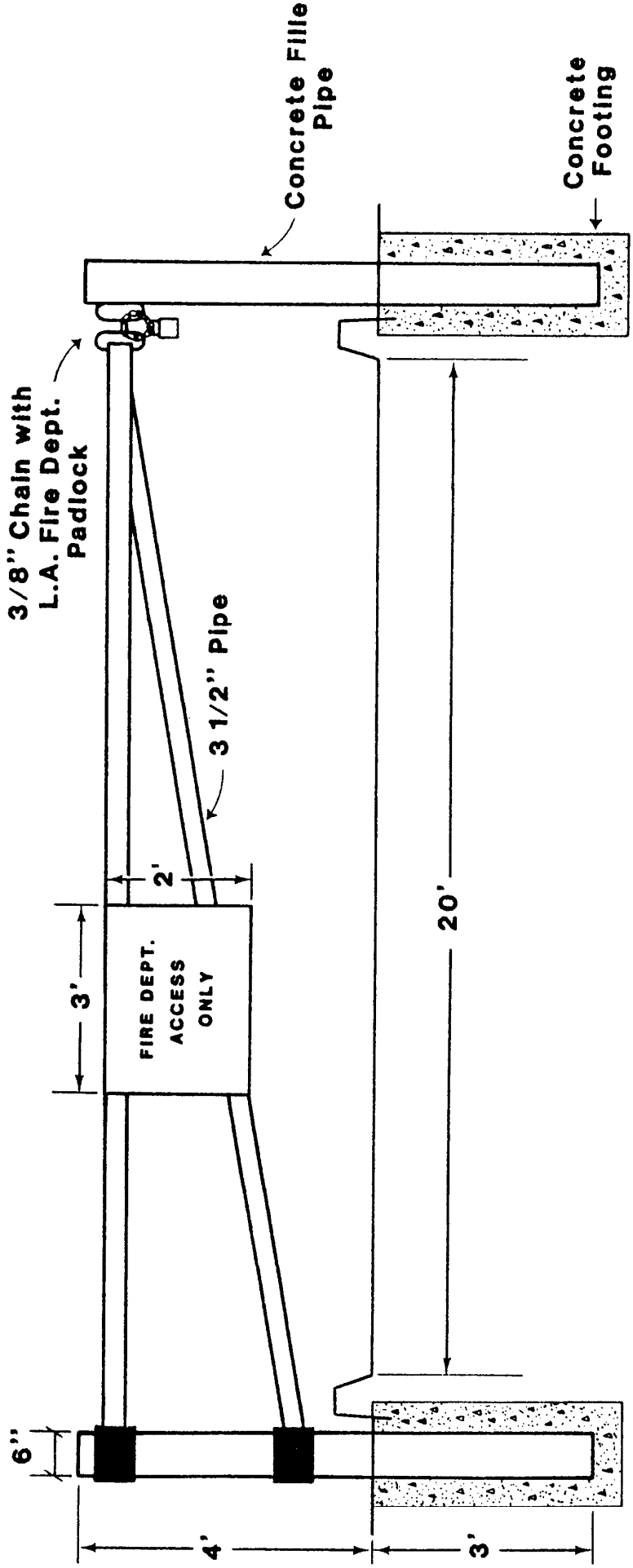
**LIST OF COMPANIES WITH APPROVED
SECURITY GATE OVERRIDE DEVICES**

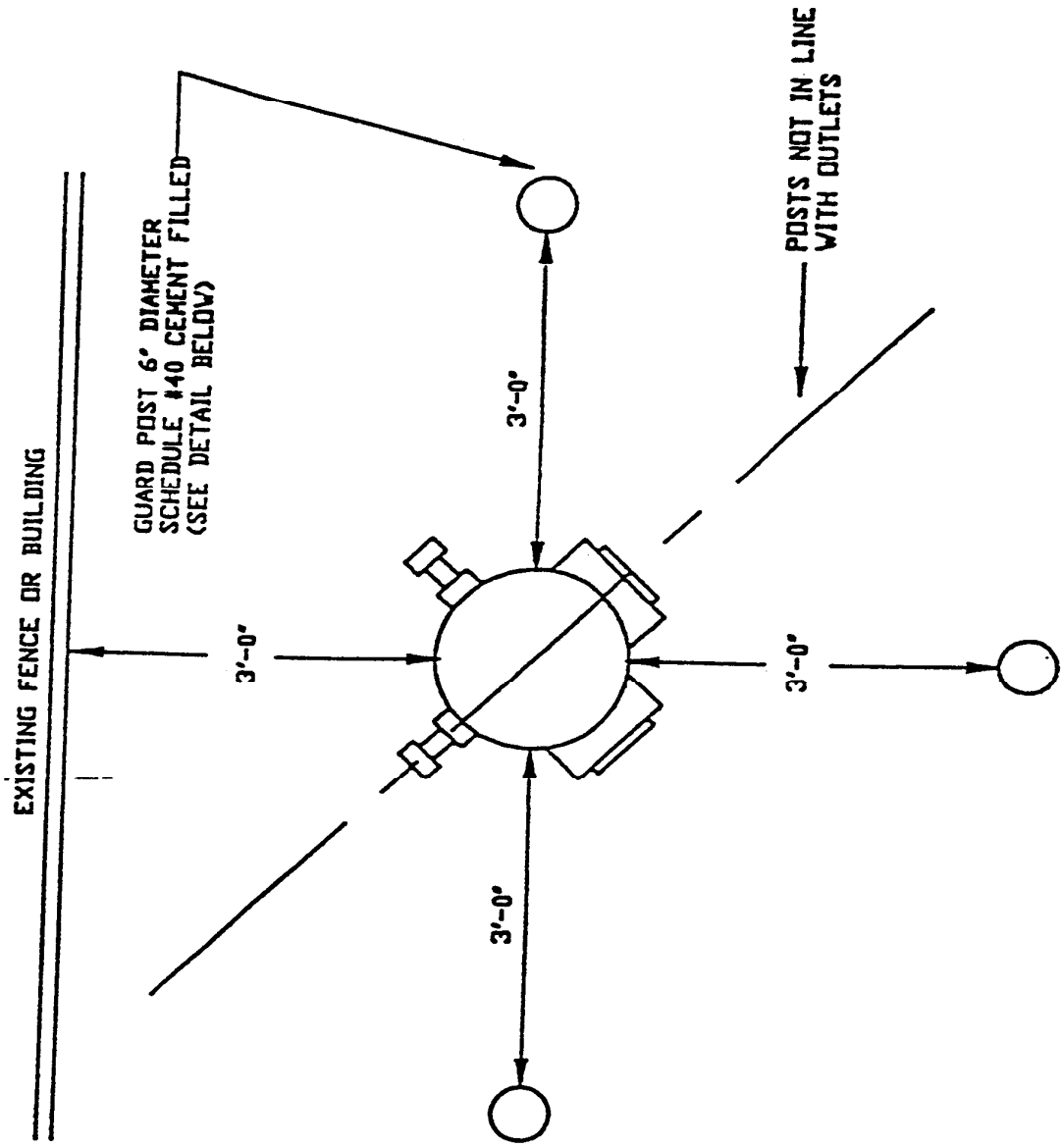
Access Controls, Inc. 177 West Magnolia Blvd. Burbank, CA 91502	FAAC International, Inc. 1904 Lynngrove Drive Manhattan Beach, CA 90266
Bradford Enterprises, Inc. 12420 Montague Street, Unit E Pacoima, CA 91331	GateCo, The Gate Company of Santa Barbara 2101 Refugio Road Goleta, CA 93117
City Welding & Iron Works 1408 E. Slauson Avenue Los Angeles, CA 90011	Gate Controls, Inc. 2334 E. 8 th Street Los Angeles, CA 90021
Court Security Systems, Inc. 16521 Saticoy Street Van Nuys, CA 91406	Gemini Construction and Security Company 7660 San Fernando Road Sun Valley, CA 91352
Customline, Inc. 950 W. Cinega Avenue San Dimas, CA 91773	Gonzalez & Farago Enterprise, Inc. 2205 Lee Avenue, Unit A S. El Monte, CA 91733
DeRevere & Sons Electric Gate P.O. Box 2642 Canyon Country, CA 91386	Marina Electronics 9046 Lindblade Street Culver City, CA 90230
Door King 120 Glasgow Avenue Inglewood, CA 90301	Nationwide Security System 3216 W. El Segundo Hawthorne, CA 90250
Dorene Mfg., Inc. 10755 E. Artesia Blvd., #H,J,K Cerritos, CA 90701-3674	Republic Fence Co., Inc. 11309 Danube Avenue Granada Hills, CA 90021
Electronic Gate System Inc. 13719 Ventura Blvd., #C Sherman Oaks, CA 91432	Rick's Gate Works 8723 Remmet Avenue Canoga Park, CA 91304
Eli Industries 19015 Parthenia Street, #L Northridge, CA 91324	Specialty Iron Works 12435 Foothill Blvd. Sylmar, CA 91342

This list is not an endorsement. Any gate company may be used as long as they have received an approval letter from this office for an approved Security Gate Override Device prior to installation of any gates.

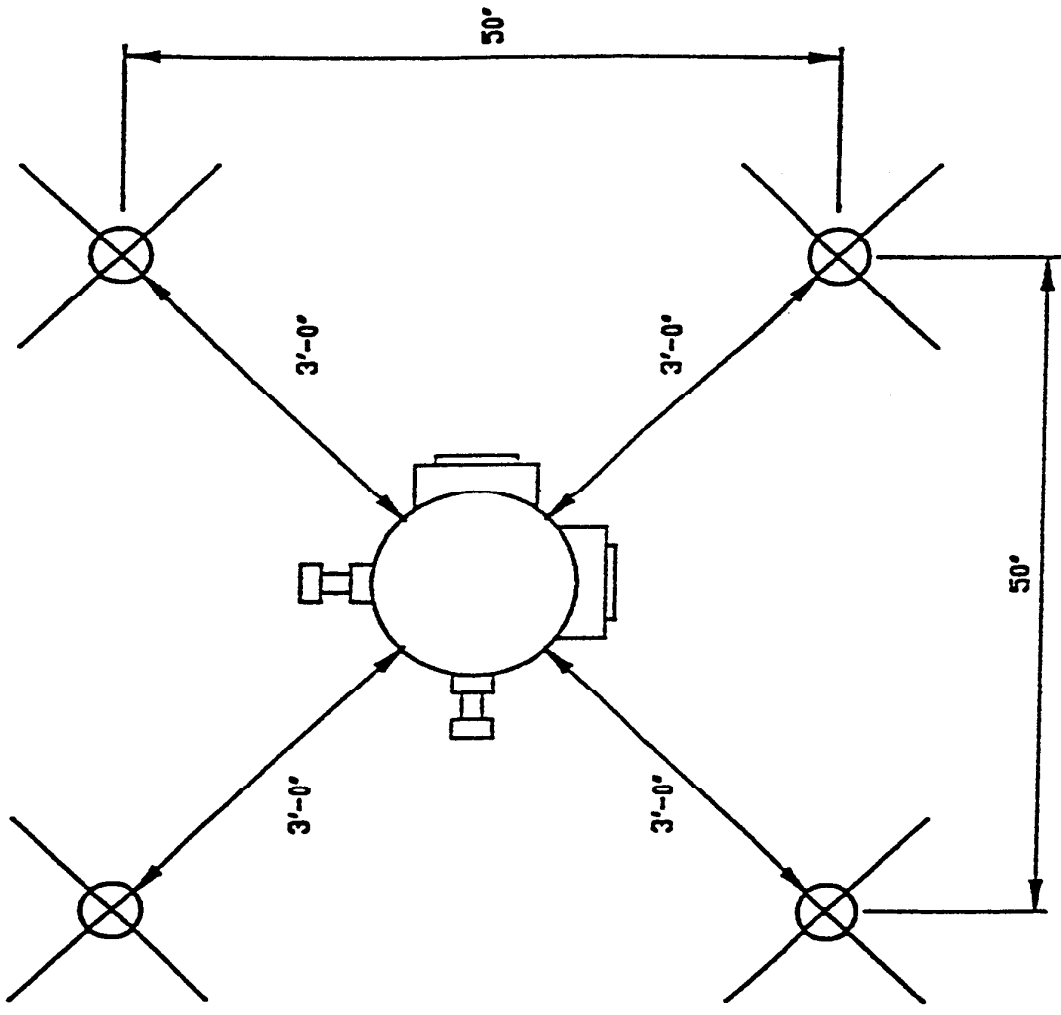
Any questions concerning security gate installations may be directed to the Hydrant and Access Unit at (213) 482-6543.

MINIMUM GATE STANDARD

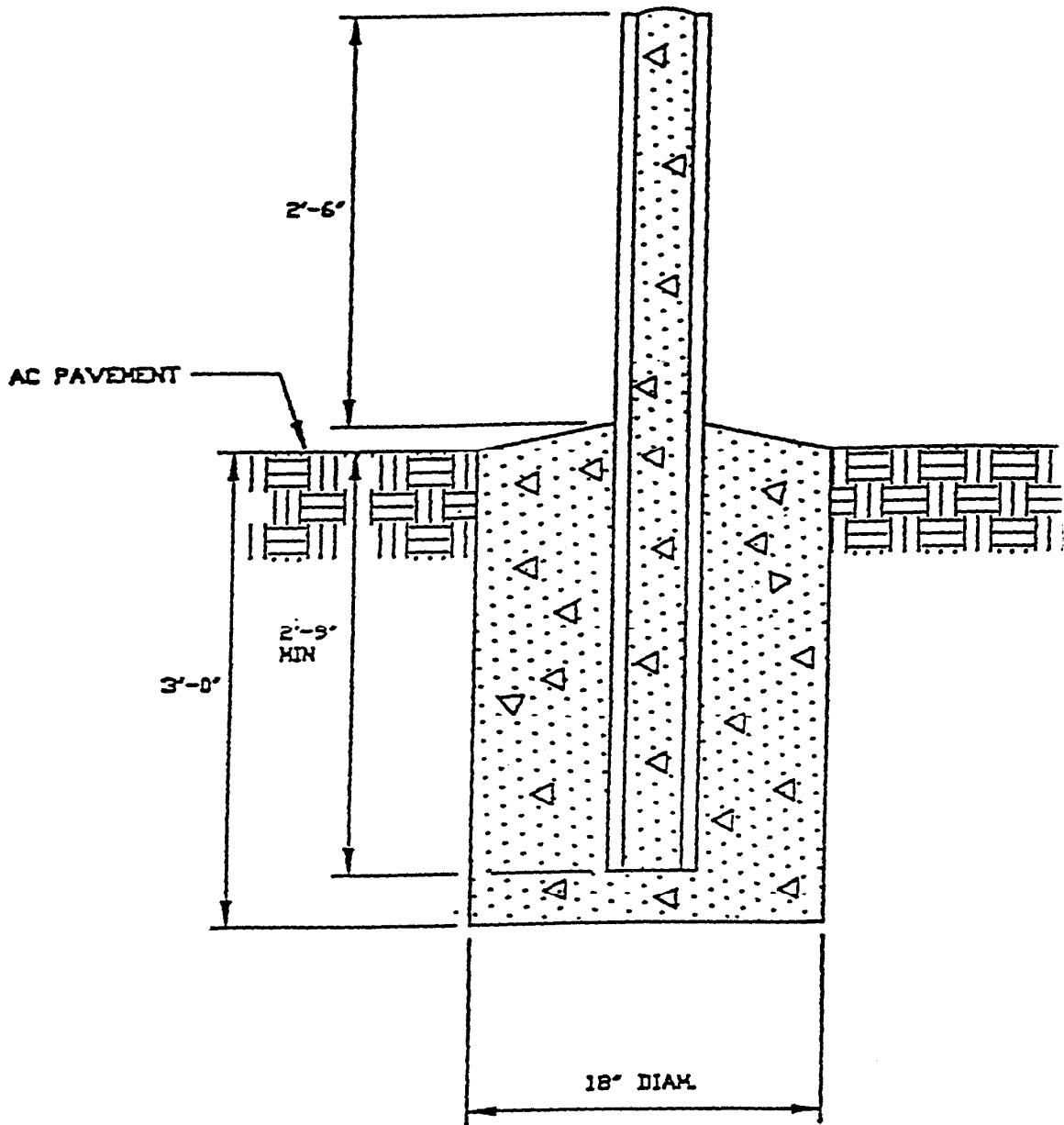




GUARD POST SPACING



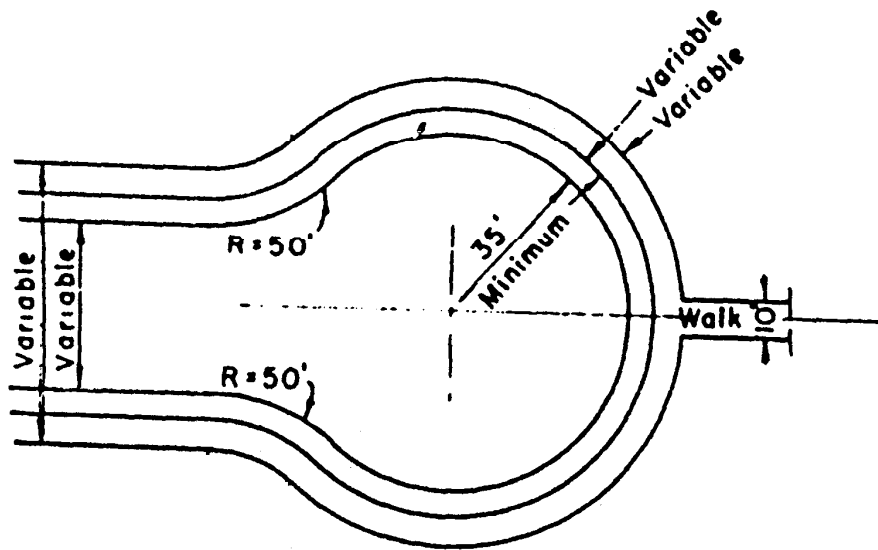
GUARD POST SPACING



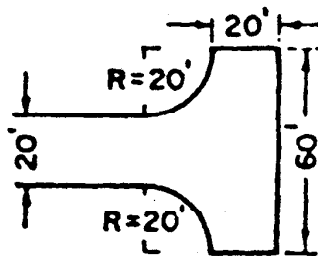
GUARD POST DETAIL

N.T.S.

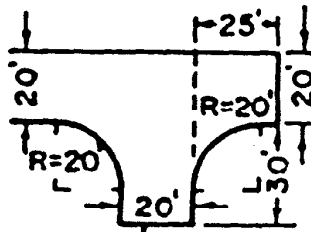
1. GUARD POSTS ARE SCHEDULE #40, 6" DIAMETER STEEL PIPE.
2. CONCRETE FOOTING IS 3' DEEP WITH AN 18" DIAMETER.
3. POST IS EXPOSED 2'-6" ABOVE PAVEMENT, WITH 2'-9" MINIMUM BURY.
4. OBSERVE 3'-0" CLEARANCE FROM HYDRANT.



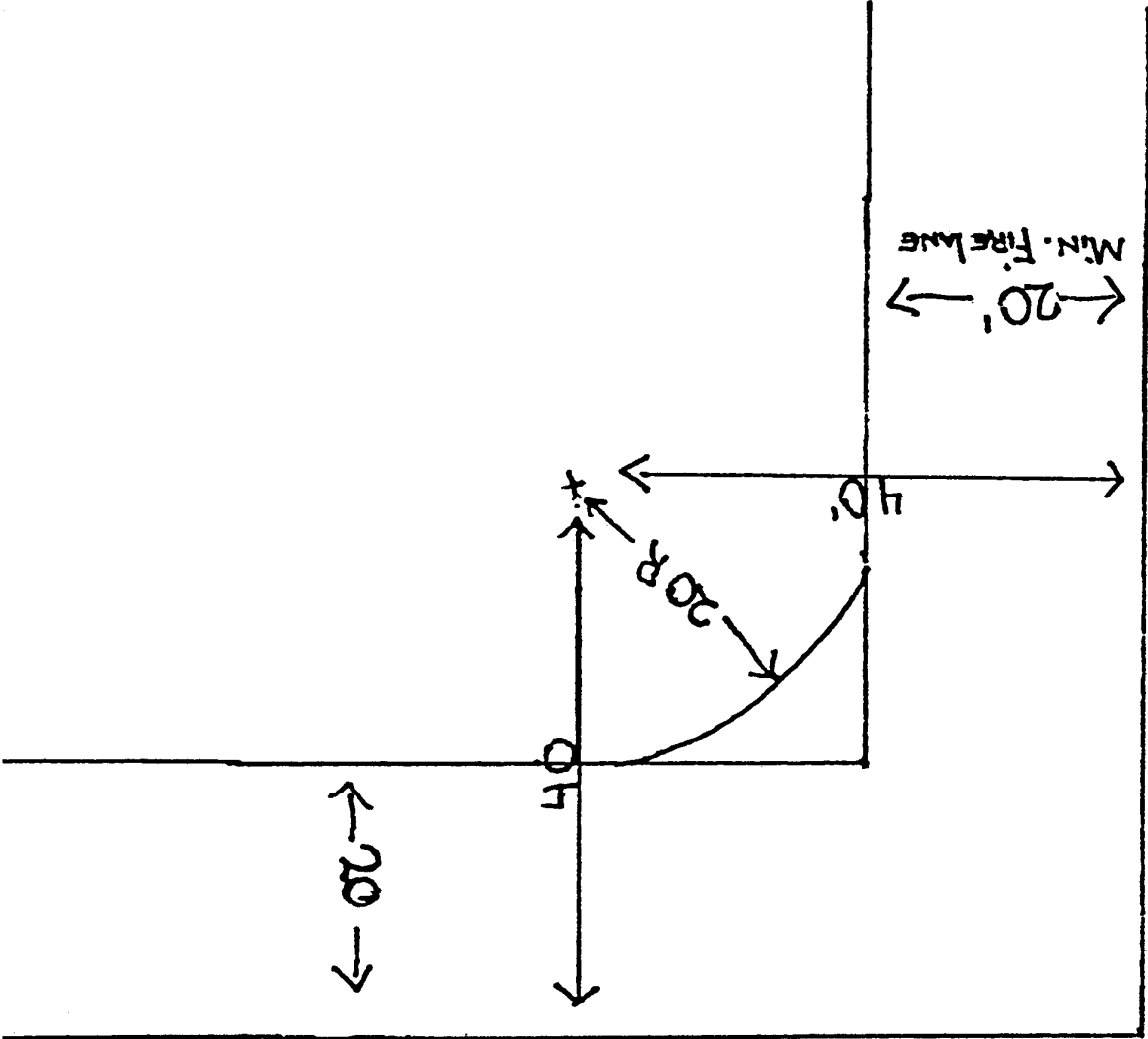
CUL-DE-SAC
 (Plan View)
 MAY BE UNSYMMETRICAL



STANDARD TURNING AREA
 (Plan View)



MINIMUM TURNING AREA
 (Plan View)

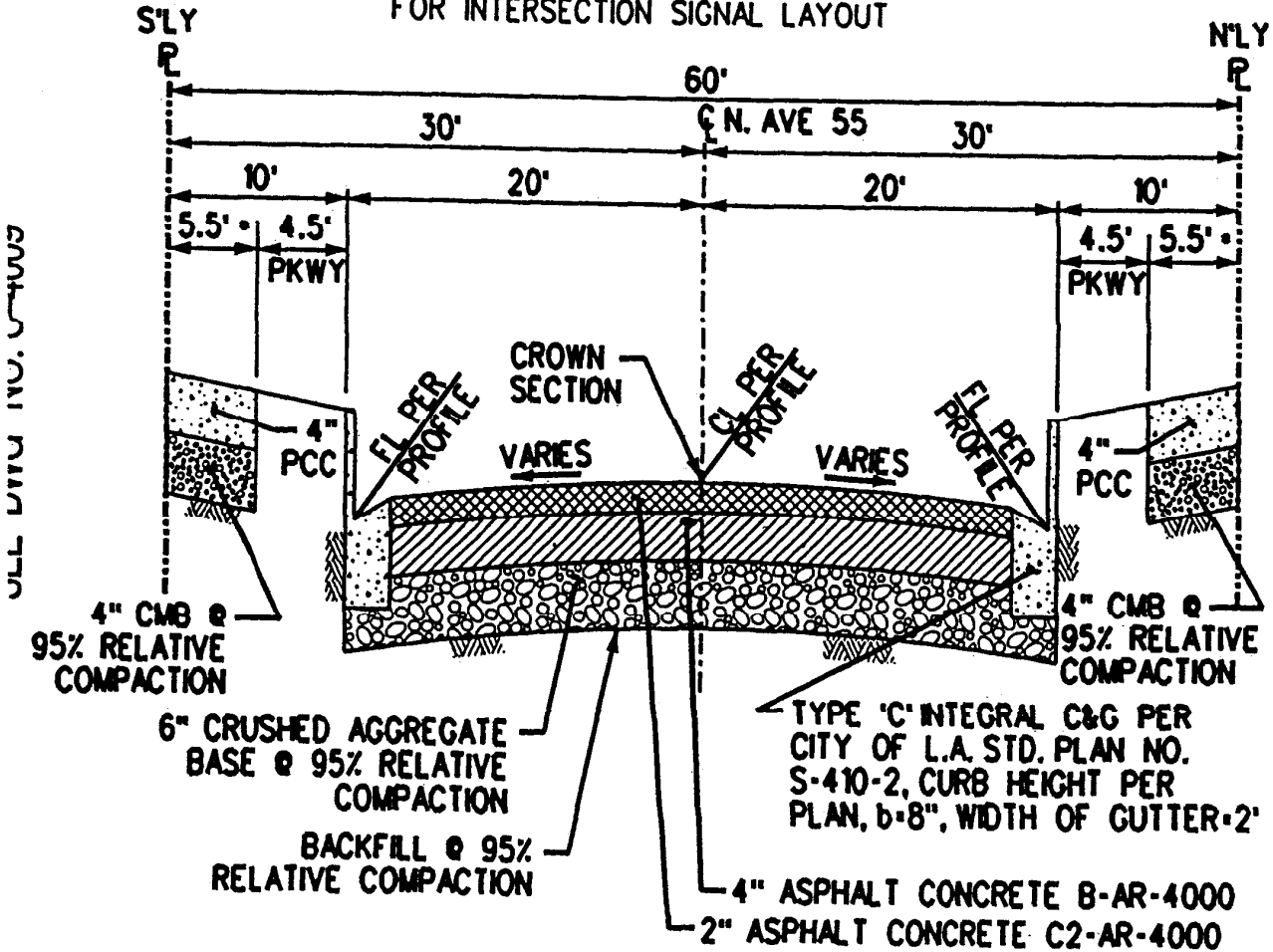


532.71 FS

C & G,
AVEMENT

EXISTING CONDITIONS AND DEMOLITION	C-0114, C-0115
PLAN AND PROFILE (TRACK)	C-0314, C-0315
EMBEDDED TRACK DETAILS	C-4045
ROADWAY PROFILES	C-4034, C-4040
ROADWAY CROSS SECTIONS	C-4019
TYPICAL SECTIONS AND DETAILS	C-4029 - C-4032
WORKSITE TRAFFIC CONTROL	
SIGNING & STRIPING	C-0909
EXISTING UNDERGROUND UTILITIES	U-0114, U-0115
EXISTING OVERHEAD UTILITIES	U-0165
COMPOSITE UTILITY REARRANGEMENT	U-0214, U-0215
DRAINAGE PLAN & PROFILE	U-0313, C-4027, C-4026
C/S DUCTBANK	C-0358
FIRE HYDRANT RELOCATION	U-0215

SEE LADOT TRAFFIC SIGNAL PLAN
FOR INTERSECTION SIGNAL LAYOUT



• TRANSITION 10' APPROACHING THE JOIN LINE TO MATCH EXISTING WIDTH.

TYPICAL STREET SECTION - AVENUE 55

HORIZ.: 1" = 10'